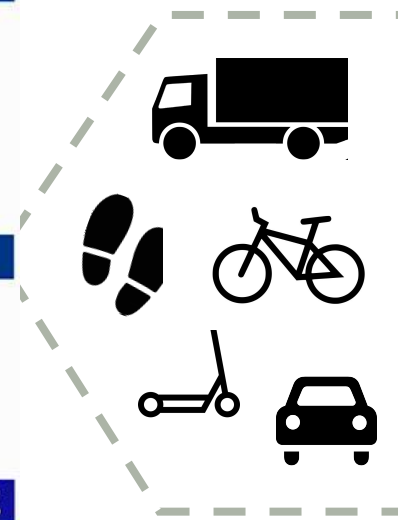


**National Infrastructure Summit - Dublin  
May 2023**

# **Infrastructure for London: TfL's strategic approach to infrastructure project delivery**

**Eleni Harlan  
TfL Consulting**



# Successful city planning

## City vision

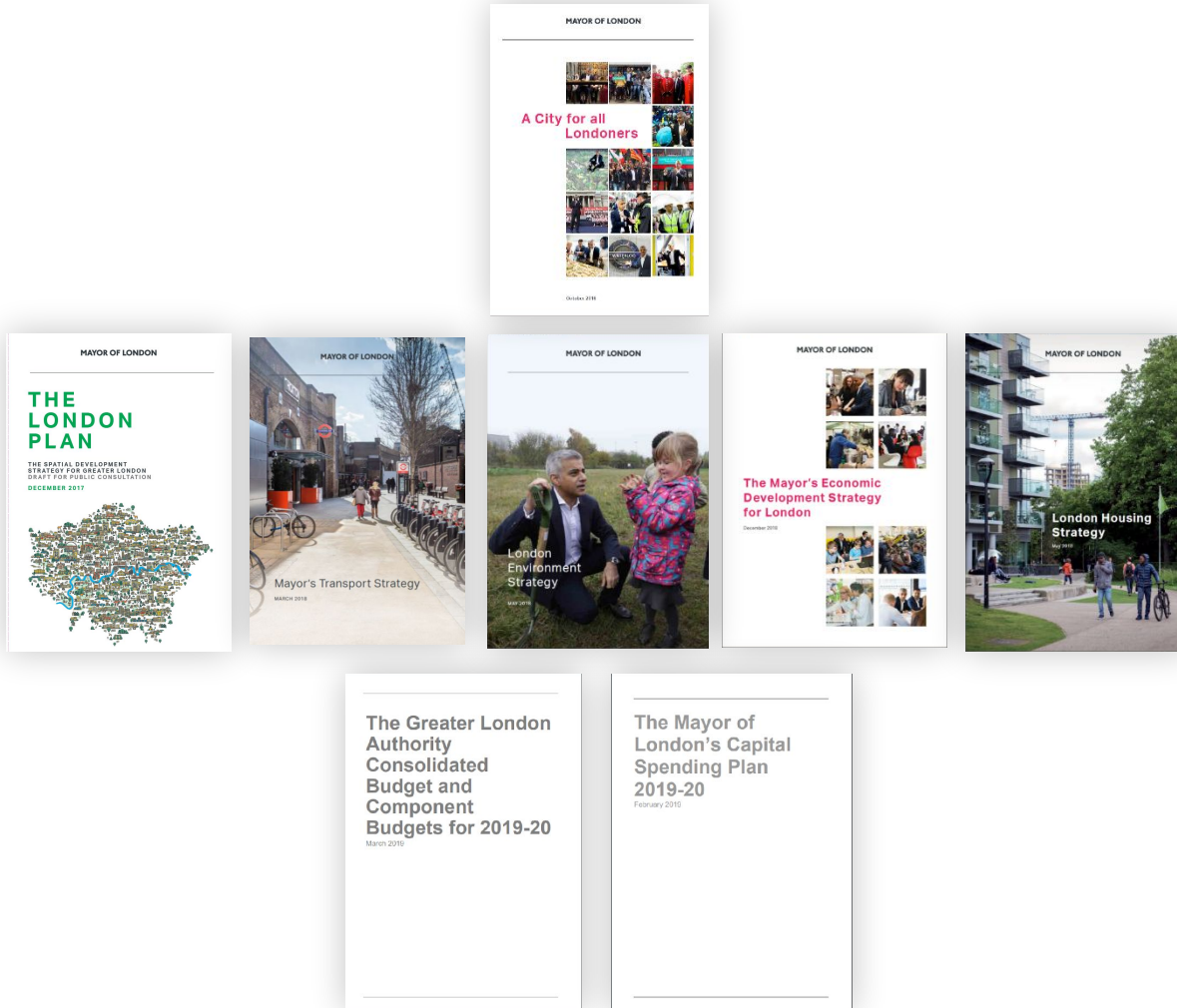
A clear view on the long term success of the city as a place to live and work

## Integrated planning

Evidence based, objective transport and spatial plans, focussed on economically productive, sustainable development

## Governance

Unified business plans and investment plans





# The Mayor's Transport Strategy

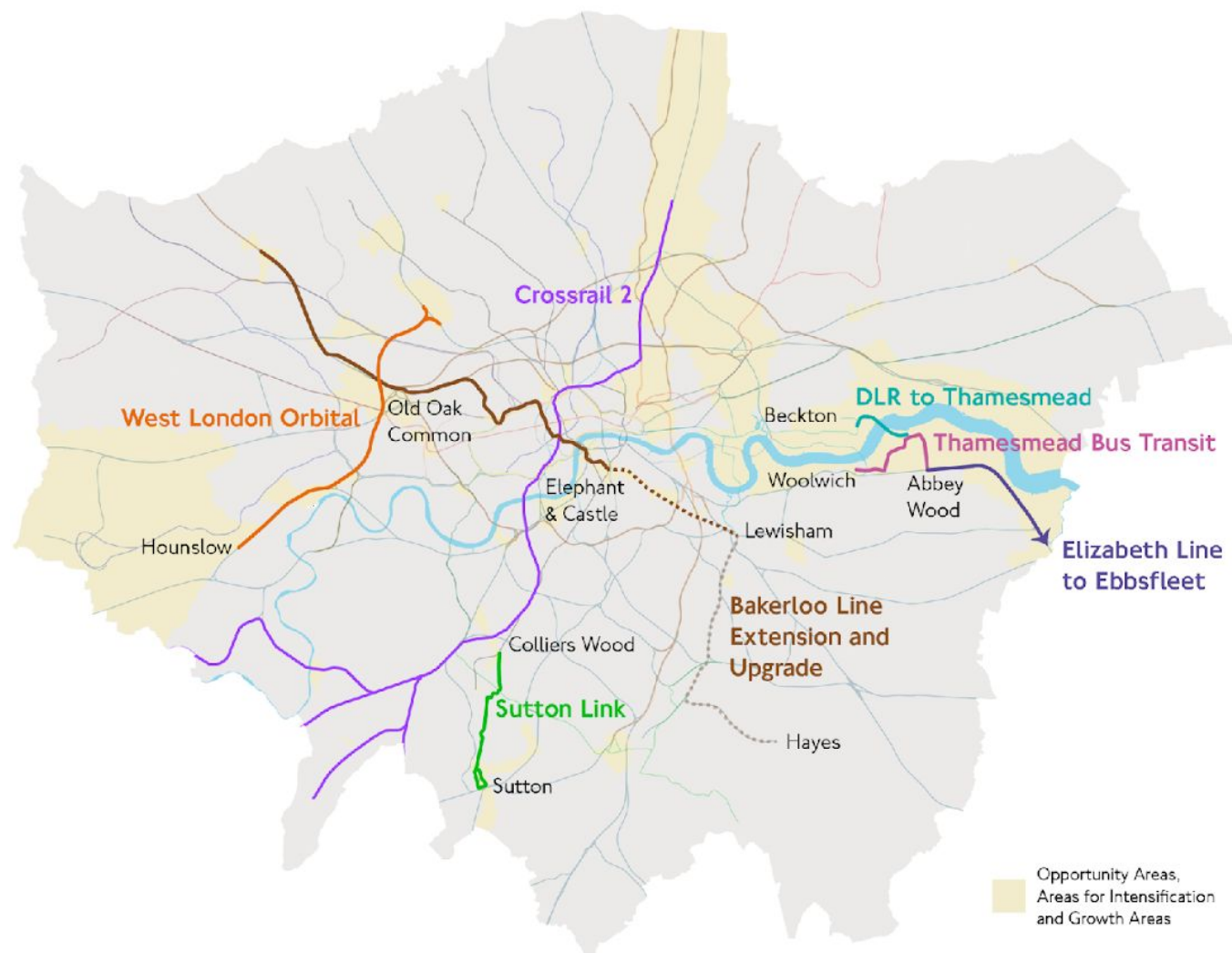








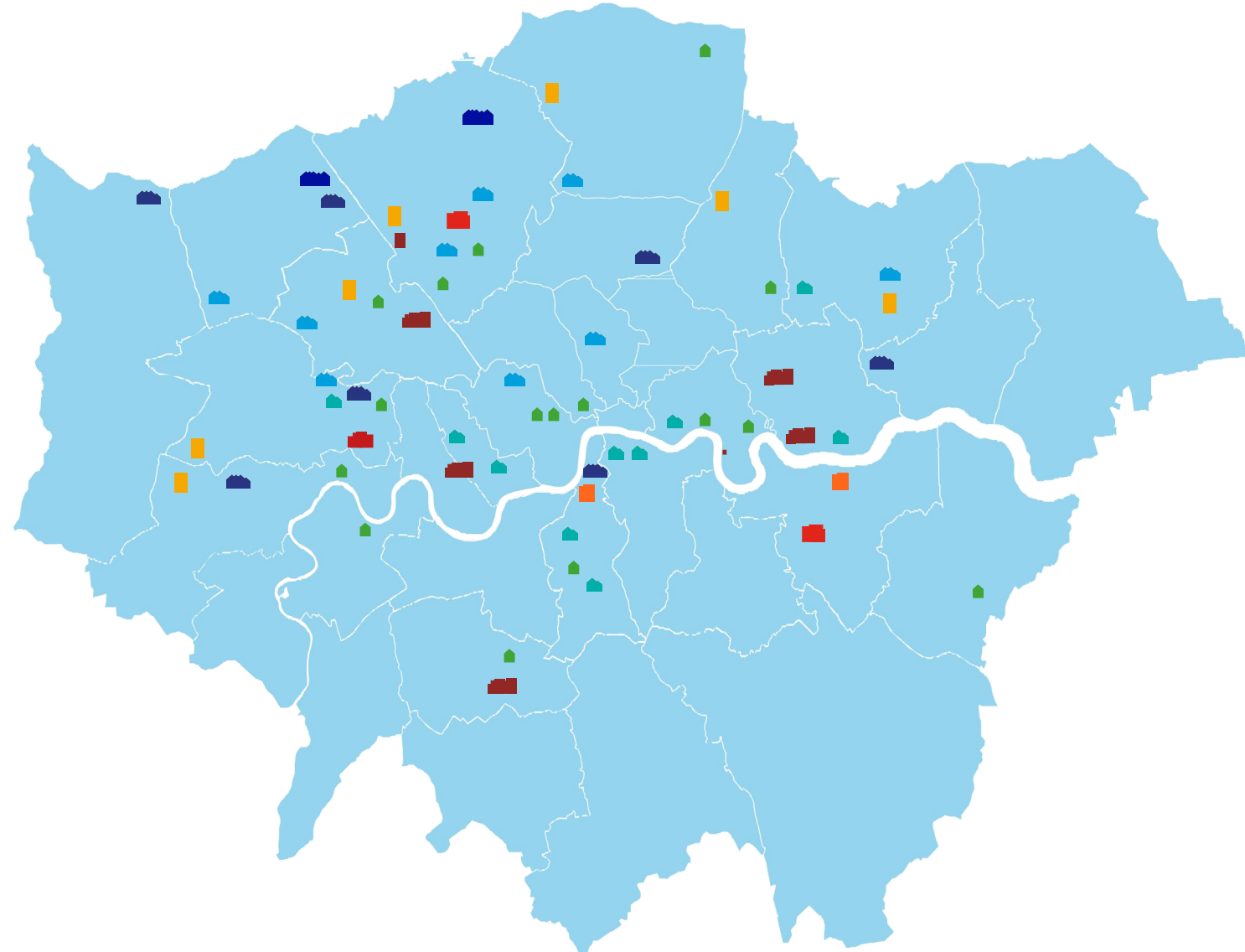
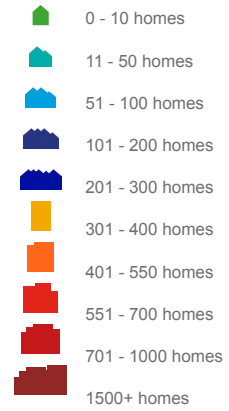
# Network Extension Proposals



These schemes are focused on extending the reach of the transport system to unlock the biggest areas of housing potential (which are currently not well served by PT), and make development viable. This is necessary alongside ongoing capacity increases to the existing system.

# TfL's Property Development Locations

## LONDON LOCATIONS KEY













**Thank you**  
[TfLConsulting@tfl.gov.uk](mailto:TfLConsulting@tfl.gov.uk)